



# ***SymSMB 3.50***



## ***User Guide***

Symbian and the 'for Symbian OS' logo are trademarks or registered trademarks of Symbian Software Ltd

## TABLE OF CONTENTS

<b>1</b>	<b>DOCUMENT INFORMATION .....</b>	<b>4</b>
1.1	TERMINOLOGY .....	4
1.2	REVISION HISTORY .....	4
<b>2</b>	<b>INTRODUCTION .....</b>	<b>5</b>
2.1	SUPPORTED PROTOCOLS.....	5
2.2	FEATURE LIST .....	6
2.3	HOW IT WORKS ON THE DEVICE .....	6
2.4	SUPPORTED PLATFORMS & DEVICES.....	7
2.5	POSSIBLE CHARGES .....	7
<b>3</b>	<b>INSTALLATION AND PREPARATION.....</b>	<b>7</b>
3.1	PRE-REQUISITES .....	7
3.2	TRIAL AND REGISTRATION .....	8
<b>4</b>	<b>QUICK START .....</b>	<b>8</b>
4.1	HOW TO LAUNCH.....	8
4.1.1	First launch of Trial version .....	8
4.1.2	Regular appearance.....	10
4.2	GENERAL NOTES ON INFORMATION PRESENTATION .....	10
4.2.1	Data presentation .....	10
4.2.2	Navigation in a list presentation .....	11
4.2.3	Navigation in a properties presentation .....	12
4.2.4	Menu commands.....	12
4.3	MAIN SCREEN OVERVIEW .....	13
4.4	EASY CONFIGURATION.....	13
4.4.1	Configuration for "Phone-Network" direction.....	13
4.4.2	Configuration for "Network-Phone" direction.....	15
4.4.3	Auxiliary aspect of "Control Panel" section.....	18
<b>5</b>	<b>DETAILED DESCRIPTION .....</b>	<b>19</b>
5.1	"MY PHONE" SECTION .....	19
5.1.1	"My Phone" menu options .....	19
5.1.1.1	Volume properties .....	20
5.1.2	Drives.....	20
5.1.2.1	File/Folder properties .....	21
5.2	"NETWORK NEIGHBOURHOOD" SECTION.....	21
5.2.1	Login procedure .....	22
5.2.2	Network computers .....	22
5.2.2.1	"Properties" menu option .....	22
5.2.3	Network shares.....	23
5.2.3.1	Network Share's menu options.....	23
5.2.4	Network Share file operations .....	23

5.3	"CONTROL PANEL" SECTION .....	24
5.3.1	Phone's folder sharing procedure .....	24
5.3.2	Network resource mapping procedure.....	24
5.3.3	Navigation inside the "Control Panel" .....	25
5.3.4	General "Control Panel" menu options.....	25
5.3.5	Accounts .....	25
5.3.5.1	Account properties.....	26
5.3.6	Connections .....	26
5.3.6.1	"Connections" menu options.....	27
5.3.6.2	Connection properties.....	27
5.3.7	Shared Folders.....	27
5.3.7.1	"Shared Folder" properties .....	27
5.3.7.2	"Shared folders" menu options.....	28
5.3.7.2.1	"Permissions" list .....	28
5.3.7.2.2	Permission properties.....	29
5.3.8	Mapped Network Drives .....	29
5.3.8.1	Network drive properties.....	29
5.3.8.2	"Network Drives" Menu options .....	30
<b>6</b>	<b>ACCESS FROM NETWORK TO PHONE.....</b>	<b>30</b>
6.1	CONNECTION START.....	30
6.2	ACCESS TO PHONE'S SHARED FOLDERS FROM YOUR COMPUTER .....	30
6.2.1	Windows .....	30
6.2.1.1	Network browsing.....	31
6.2.1.2	Drive mapping .....	31
6.2.1.3	Full network share name path access methods .....	33
6.2.1.4	A shortcut usage .....	34
6.2.2	Linux .....	34
6.2.2.1	Low level or mount .....	34
6.2.2.2	High level or VFS (Virtual File System) .....	36
6.2.2.3	Few final words about the methods difference .....	38
6.2.3	Mac.....	38
6.2.3.1	Phone shared folders mounting .....	38
6.2.3.2	Mac folders sharing .....	40
6.3	EVERYDAY WORK SCENARIO.....	41
<b>7</b>	<b>LICENSING AND REGISTRATION .....</b>	<b>41</b>
7.1	TRIAL LICENSE.....	42
7.2	HOW TO REGISTER.....	42
7.3	LEGAL LICENSE .....	43
<b>8</b>	<b>EXIT AND SHUTDOWN .....</b>	<b>44</b>
<b>9</b>	<b>CONCLUSION.....</b>	<b>44</b>

# 1 DOCUMENT INFORMATION

This document is the user guide for the **SymSMB 3.50** (S60) application.

## 1.1 TERMINOLOGY

Abbreviation	Definition
SIS	Symbian OS Installation System
S60	Symbian OS Series 60 platform (3d edition)
SMB	<b>Server Message Block</b> - is an application-level network protocol mainly applied for shared access to files, printers, serial ports, and miscellaneous communications between nodes on a network. CIFS is an enhanced version of Microsoft's open, cross-platform Server SMB protocol, the native file-sharing protocol in the Windows 95, Windows NT®, and OS/2 operating systems and the standard way that millions of PC users share files across corporate intranets. CIFS is also widely available on Unix, VMS, and other platforms.
CIFS	<b>Common Internet File System</b> - a standard remote file-system access protocol for use over the Internet, enabling groups of users to work together and share documents across the Internet or within corporate intranets. CIFS is an open, cross-platform technology based on the native file-sharing protocols built into Microsoft® Windows® and other popular PC operating systems, and supported on dozens of other platforms. With CIFS, millions of computer users can open and share remote files on the Internet without having to install new software or change the way they work.
SymSMB	SMB system for Symbian

## 1.2 REVISION HISTORY

Date	Version	Description
05-Apr-08	0.01	First draft
07-Apr-08	1.00	Release 1

## 2 INTRODUCTION

**SymSMB 3.50** is an application that turns your phone into a fully-functional networking device.

With **SymSMB 3.50** you can:

- share phone's folders or drives such that they can be accessed from any computer on a network;
- access your phone from different operating systems: **Windows, Mac OS, Linux, UNIX**;
- work with your phone's files from a computer the same way as with a regular network resource (for example, through "**Network neighbourhood**", "**My Network Places**", etc) without additional software installation or configuration on the computer;
- browse the network from your phone as you would from your favourite desktop computer;
- get access to the network resources according to the permissions that you have for the resource;
- map network drives on the network for easy access in the future;
- do all the above using any available transport bearer (**Wi-Fi, GPRS, 3G, WiMAX, Bluetooth**, etc.) that is configured as a Symbian Internet access point;

To summarize the above, SymSMB 3.50 performs two main functions. They are:

- 1) Browsing the network with access permissions according to your permissions on the computer;
- 2) Permitting access to local phone drives from external network.

Main benefits of **SymSMB 3.50**:

1. There is no need to use any wires;
2. There is no need for complementary software or driver installation on the computer;
3. There is no need to have registration on a third party Internet web-site offering a proxy service between your phone and a computer.
4. The connected phone is fully functional (receive incoming calls, use other applications, etc.):
5. Files on the phone can be accessed not just from one but multiple computers.

### 2.1 SUPPORTED PROTOCOLS

Protocol	Description
CIFS/SMB	Common Internet File System. Allows you to share/access files to/from network computers.
NetBIOS	Network Basic Input/Output System is a protocol that allows applications on different computers to communicate within a local area network.
RPC	Remote Procedure Call is a protocol that one program can use to request a service from a program located on another computer in a network without having to understand network details.
RAP	Remote Administration Protocol. CIFS Browser Protocol uses the Remote Administration Protocol to enumerate the servers on the network.
DNS	The most basic task of DNS is to translate hostnames to IP addresses.
DHCP	DHCP (Dynamic Host Configuration Protocol) is a communications protocol that

	lets network administrators centrally manage and automate the assignment of Internet Protocol (IP) addresses in an organization's network.
NTLM	NTLMv2 (NT LAN Manager, version 2) is a Microsoft authentication protocol used with the SMB protocol. It is used for authentication with Microsoft remote access protocols.
WiFi (WLAN)	Wi-Fi (short for "wireless fidelity") is a term for certain types of wireless local area network (WLAN) that use specifications in the 802.11 family.
HSDPA	HSDPA (High-Speed Downlink Packet Access) is a packet-based mobile telephony protocol used in 3G UMTS radio networks to increase data capacity and speed up transfer rates.

## 2.2 FEATURE LIST

Feature	Description
Network neighbourhood browsing	Network neighbourhood browsing allows you access to shared files on different computers in a domain, workgroup or in peer-to-peer networks.
Network drives mapping for access from the phone	SymSMB 3.50 (for S60) allows you to map network drives. Mapped drives are used for network file access.
Network files operations	All standard network file operations (Copy/Cut/Paste/Delete/Rename) are supported by SymSMB 3.50 (for S60).
Energy management	Advanced energy management is implemented by SymSMB 3.50 (for S60) for accessing network computers from a phone. Energy management of SymSMB 3.50 (for S60) allows you to save battery life without compromising network access performance.
Phone becomes network file server	SymSMB 3.50 (for S60) implements CIFS/SMB based network file server for secure and reliable access to phone files from any network computer.
Domain/workgroup registration/ browsing and name resolution support	SymSMB 3.50 (for S60) allows phone to register in a domain- or workgroup-based networks.

## 2.3 HOW IT WORKS ON THE DEVICE

**SymSMB 3.50** system consists of:

- several servers that implement **CIFS/SMB** and other network protocols according to current configurations and
- UI application which gives fully-functional access not only to the internal phone drives but also to the locations shared by the computers on the Net. A user can configure and control the system on the fly as well as via the "Options" menu.

---

## 2.4 SUPPORTED PLATFORMS & DEVICES

---

**SymSMB 3.50** is a transport-independent product. Any wireless technology supported by Symbian Access Point can be used to access the network. It does not matter whether it is **Wi-Fi, GPRS, 3G, WiMAX, Bluetooth** or something else. If the access point specified by SymSMB user is operating, then **SymSMB** will work properly. However, we believe that Wi-Fi is the most appropriate wireless medium for our product.

The application is compatible with the following devices:

- Nokia E-Series:
  - E51, E60, E61, E61i, E65, E70, E90;
- Nokia N-Series:
  - N78, N80, N80 Internet Edition, N81, N81 8GB, N82, N91, N91 8GB, N92, N93, N93i, N95, N95 8GB, N96

It is expected that **SymSMB 3.50** will work normally with upcoming:

- Samsung G810;

---

## 2.5 POSSIBLE CHARGES

---

Connection to and use of the Internet from your cell phone is typically not free. Whether or not you will be charged for using **SymSMB 3.50** (namely, for use of Internet via a Data bearer) can be determined from your local service provider.

## 3 INSTALLATION AND PREPARATION

The **SymSMB 3.50** is supplied as a single Symbian OS Installation System (SIS) file. It must be transferred to the phone via any previous version of SymSMB or through USB cable, memory card, Bluetooth or downloaded from **telexy.com** website directly to you phone. Once transferred, the standard installation process can be applied.

---

### 3.1 PRE-REQUISITES

---

Before installing, ensure that the phone supports any Data bearer (**WLAN** is most recommended). Make sure that you are in the range of a selected bearer (for example **WLAN** router).

Generally speaking, the "Access Point" aspect is out of scope of our application. We rely completely on the S60 platform connectivity API. An internet account of any possible bearer type can be used.

Thus, before using the application create an appropriate Internet Account, if needed. Be sure it works properly (by connecting to Internet through it, using "Service" application).

## 3.2 TRIAL AND REGISTRATION

Telexy Networks offers its products through the following practice. Every product can be used in two stages:

- **Trial version is free to download and use.** This version is fully functional; however it works only for a limited period of time, starting on the date of installation. The tryout period is long enough to understand whether this product suits your needs or not. Thus, by the expiration date you can decide if you are ready to purchase the product.
- **Final version of a product is fully functional and time-unlimited.** First - a personalized license needs to be purchased on the [Telexy website](#). Then it should be registered on your phone (see [section 7.2](#)). These actions legitimize the final version of the product on your device. There is no need to download anything else. Once the license is provided, the trial version becomes fully operational.

Thus, after the first installation the application always finds itself in the trial version state.

## 4 QUICK START

The basic usage of the system is described in this chapter with corresponding screenshots.

### 4.1 HOW TO LAUNCH



The tool is launched from the phone's application list by selecting "SymSMB 3.50" icon.

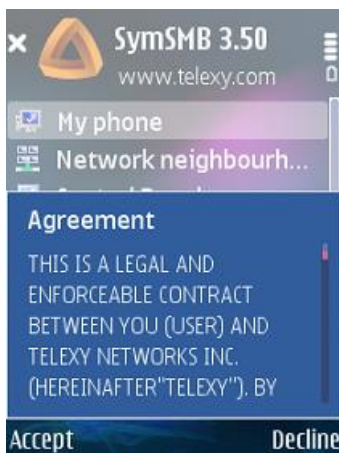
**SymSMB 3.50** icon can be placed in different application folders on different devices. Usually, it could be "Installed" or "My Own" folder. Please, refer to your phone's manual for more details.

#### 4.1.1 First launch of Trial version

First launch of trial version of the application always causes the "Product registration required!" dialog to appear – in order to use the application in free trial mode you have to go through a simple registration procedure. During this procedure SymSMB 3.50 will connect to [www.telexy.com](http://www.telexy.com) and download a trial license for your phone. Thus, select "Register" > "Free trial registration" > <Appropriate access point> in sequence.

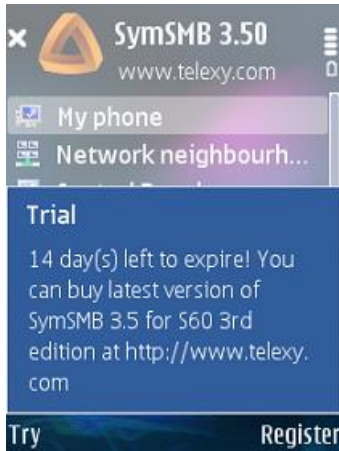


When the license is downloaded, select the "Register" option and complete the registration process by pressing "Ok" soft-key.



Right after the trial registration the "End User License Agreement" dialog will appear. Please, read it carefully and indicate your decision by pressing "Accept" or "Decline" button. "Decline" leads to the application closure. "Accept" means that you agree with EULA and therefore can use the application.

### 4.1.2 Regular appearance



Next application's screen is just a reminder that the current version is a try-out; therefore it will appear on every launch (with number of days decreasing) until trial license expiration or legal registration. Use the "Try" button to enter the application's main page.

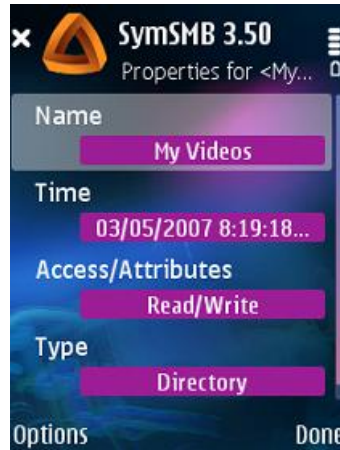
## 4.2 GENERAL NOTES ON INFORMATION PRESENTATION

### 4.2.1 Data presentation

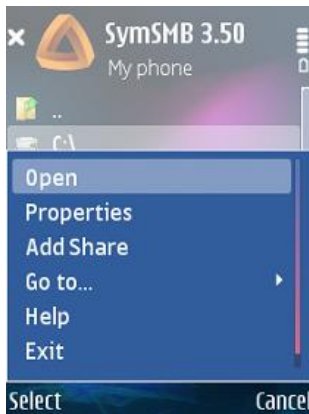
**SymSMB 3.50** presents information as a list of objects at the same hierarchy level, each of which can in turn contain a collection of objects lower in the hierarchy:



or as a set of input/display of the properties of the current object.

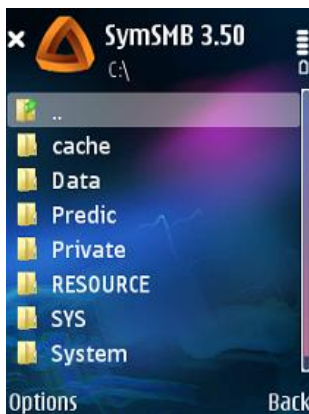


### 4.2.2 Navigation in a list presentation



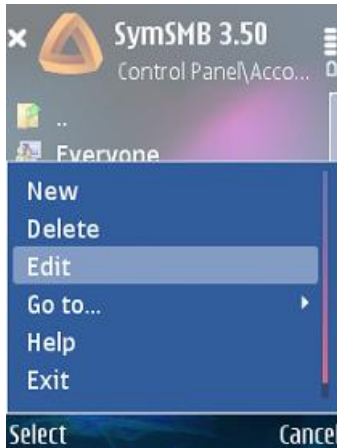
Navigation in the list of objects at the same level (servers, drives, folders, files, configuration elements, etc) is done by using "Up" and "Down" buttons of the rocker.

To access the folder at the lower level navigate to it using the cursor and then press the rocker ("Enter"), use menu item "Open" or rocker's "Right" button.



To go up to a higher level set the focus to the folder return link (📁) and use rocker's press or use rocker's "Left" button from any position.

### 4.2.3 Navigation in a properties presentation

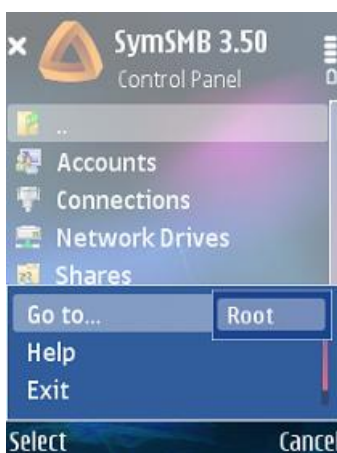


If a current folder's item is not a collection of objects at a lower level, then its properties can be viewed via a view/edit form available from menu "Edit".



Navigation between properties field in edit or view form is similar to the way described above for folders. To edit a field - press the rocker or use the menu command "Change".

### 4.2.4 Menu commands



At the display of the list of objects at any hierarchy level, the following menu commands are available:

- "Go to..." - submenu will allow returning to the **SymSMB 3.50** main window ("Root");
- "Help" – provides help for the current application's window;
- "Exit" – completes the application execution.

Some lists contain special menu options. They will be described below in the corresponding section for each list.

### 4.3 MAIN SCREEN OVERVIEW



The main screen ("Root") in **SymSMB 3.50** includes the following entries:

- 1) "My Phone" - provides access to the local and mapped network drives;
- 2) "Network neighbourhood" - allows you to browse the network;
- 3) "Control Panel" - allows you to configure, see and manage the **SymSMB 3.50** configuration and your phone's network environment;

### 4.4 EASY CONFIGURATION

As stated in the "Introduction" SymSMB 3.50 performs two main functions. They are:

- 1) Browsing the network with access permissions according to your permissions on the computer;
- 2) Permitting access to local phone drives from external network.

For simplicity, let's call the first function "Phone-Network" (following the direction of access – from the phone to the network computers) and the second "Network-Phone" (as access is from the network computer to the phone).

In the following two paragraphs we will provide the express instructions for setting up the application. Combined with aforementioned introductory information this will be sufficient to begin its use. The detailed description starts in [chapter 5](#).

#### 4.4.1 Configuration for "Phone-Network" direction

To configure the direction Phone->Network:

- Starting at the main screen, go to "Network Neighbourhood". Select an access point that allows access to the local network. When prompted for "User"/"Password", enter your user name and password for that computer in your local network that you plan to connect to. If you did not make a mistake, the computer(s) on your local network will be displayed on the screen.



- After successfully entering the network, the user table ("Control Panel\Accounts") will automatically add the record for this user. If you have this same login on multiple computers, this will be enough to access all of them. On the other hand, if on some computer you use a different login you will have to repeat the step above (then another record will be added). Only in the case when there exists a login with the SAME name, but DIFFERENT PASSWORD, you will have to specify the full name using the <computer\name> format.



- So you are now in your local network. When you enter a computer, you will first be at the shared locations level. In this case, "Map Network Drive" will appear in the menu. If you use it, a form describing new Network Drive for SymSMB pre-filled with context values will appear for this share.

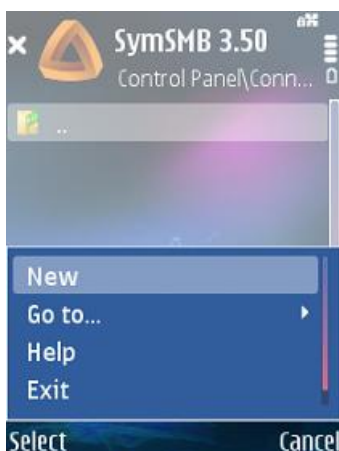


The only values that can be changed are the drive letter and possibly the "Name" field. As a result, "Control Panel/Network Drives" will have a record added for this network location. You are able now to access it from "My Phone" section just as you would for a local drive.



#### 4.4.2 Configuration for "Network-Phone" direction

To configure the direction Network->Phone:



- Start by going to the "Control Panel/Connections" table. From SymSMB point of view, a connection is the name of the phone associated with an access point that will be used to access the network. Once this connection is started up, the phone will become visible on the network under the connection name. If you plan to use various access point (home, work, etc.) then it is preferable to create connections for each of them (each with a unique name).

- when creating the connection, specify the connection name ("MyPhone" is used by default), select an access point; for the field "Workgroup" enter a workgroup or a domain name of the computer, which you plan to use to access the phone ("Workgroup " is used by default). Your phone will become a part of this domain under the title <Name> while browsing from your computer.



- to access any of the phone's resources from the outside, those shared locations need to be created first. To do this, go to "My Phone" and browse to any local drive, select the drive/folder you would like to share, and use "Add Share" menu command. As with the "Map Network Drive" case, a form pre-filled with context values will appear and it is enough to just accept these values. Note that by default, the shared location allows access to Everyone with full permissions. You can easily change this according to your preference.



- as long as one shared location is created it makes sense for anybody to access the phone from a computer. But to allow this (and only for this reason), then the connection corresponding to the actual access point needs to be started using the Start command on the "Control Panel/Connections" screen.



- when the connection is started, a new computer titled <connection name> will appear on your computer in "Network Neighbourhood"/"My Network Places"/"Network" (appropriate for your OS).

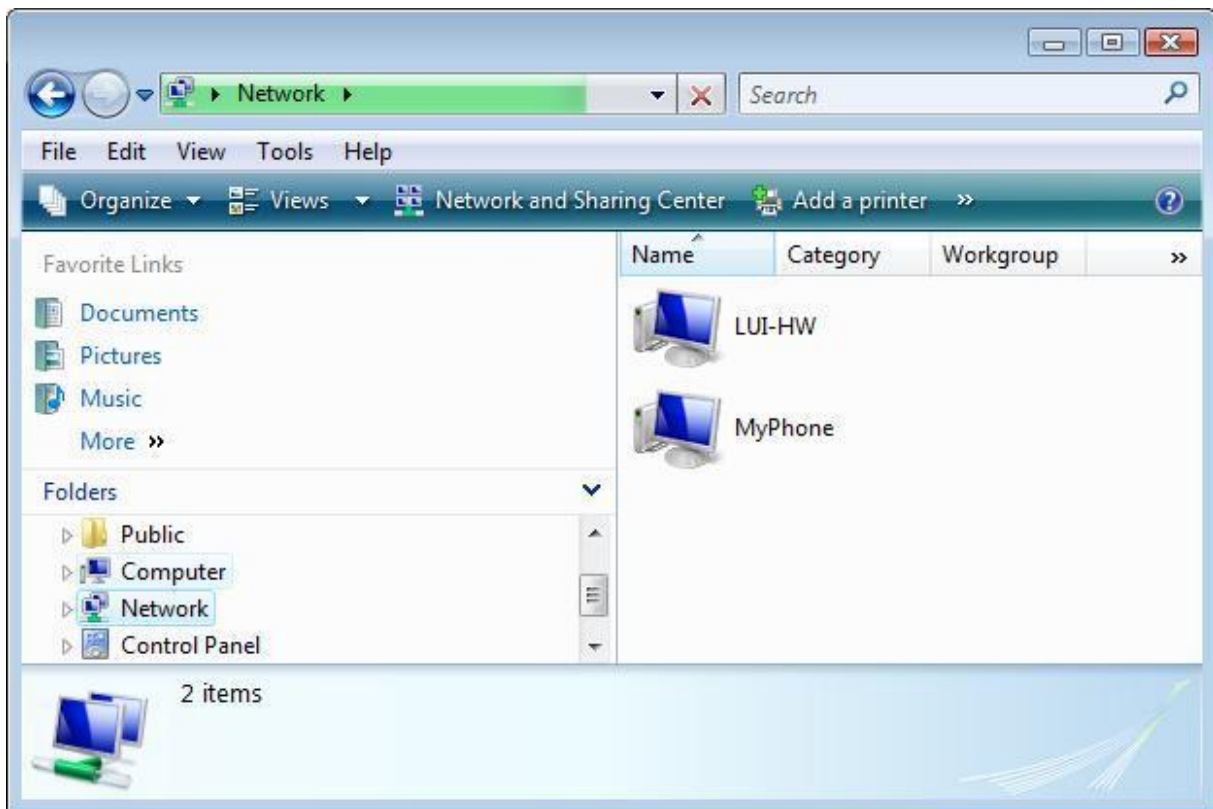


Figure 1. Phone appearance in computer's "Network" folder.

It contains the shared locations we have just defined.

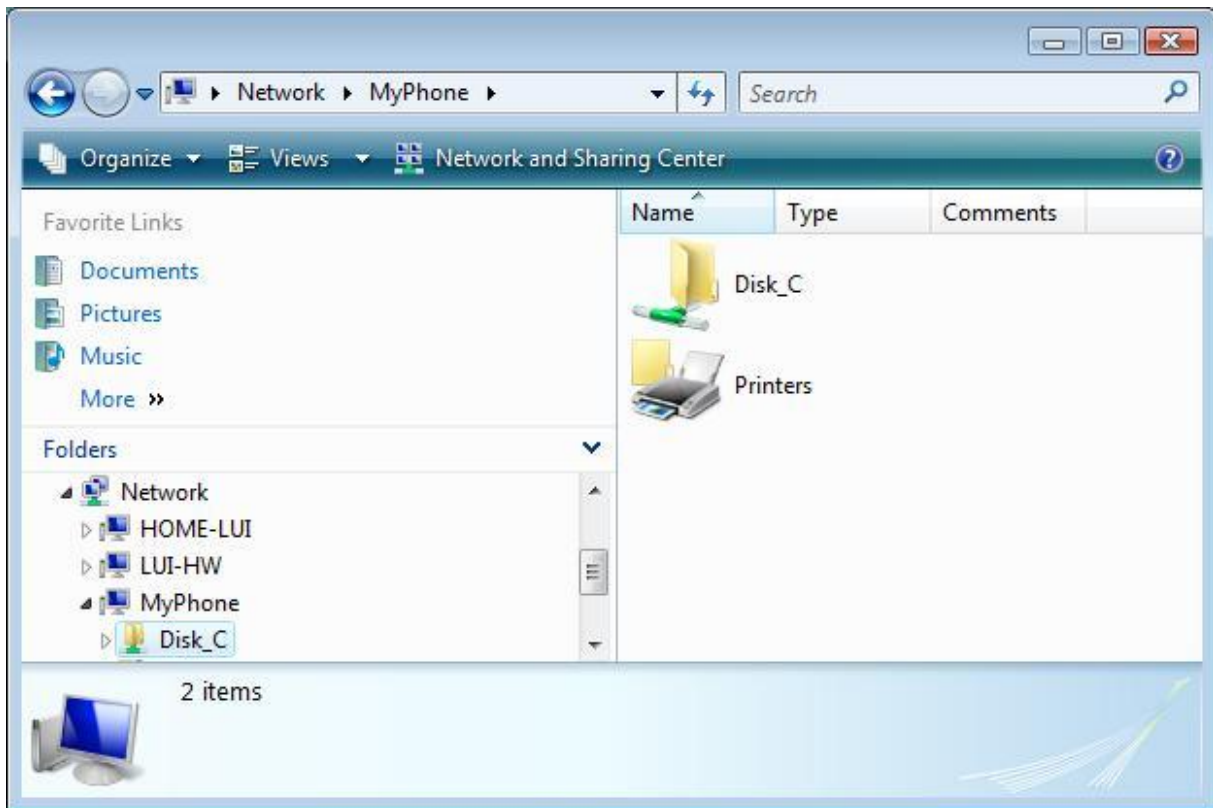


Figure 2. Phone’s shares in computer’s “Network” folder.

- if quick access to the shared locations are required from the computer, they can be mapped on the computer and then browsed as regular drives. Just don’t forget to start up the connection on the phone (or shut it down when there’s no need for connection any more).

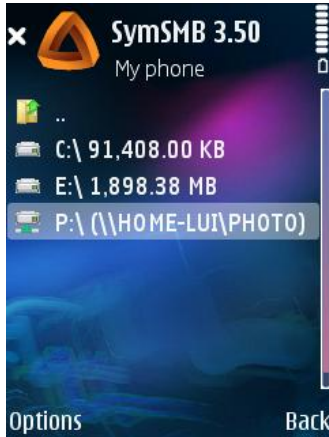
#### 4.4.3 Auxiliary aspect of "Control Panel" section

Using this approach, when all is set up during the regular use of the application, the aforementioned "Control Panel" section gains an auxiliary role of displaying the current configuration. Of course it can also be used for maintenance (edit/deletion) if required.

## 5 DETAILED DESCRIPTION

This section contains the detailed description of all the functions of the application.

### 5.1 "MY PHONE" SECTION



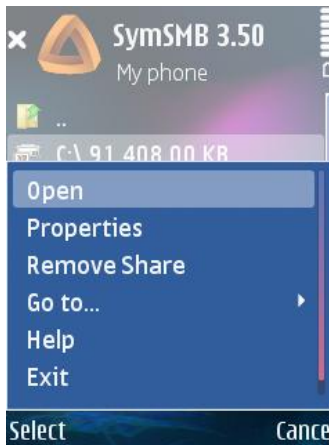
"My Phone" section gives access to SymSMB drives. This list includes local phone drives as well as network drives mapped using SymSMB.

Local (📱) and mapped network (🌐) drives have different icons.

If a local drive is shared, a special share symbol appears on its icon - 📁.

For a local drive, the number beside the drive letter displays the amount of free space. For a mapped drive, the brackets display the network drive name.

#### 5.1.1 "My Phone" menu options



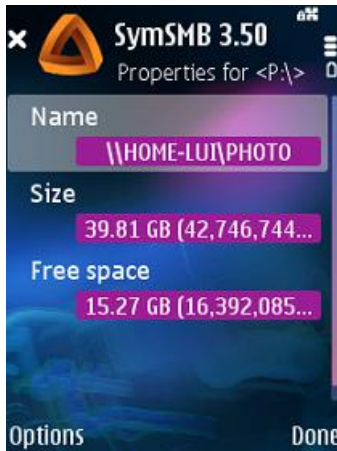
Menu options for this screen:

- "Properties" – displays this drive's (volume) properties ([see section 5.1.1.1](#));

For local drives, the following commands are possible depending on its state (not shared/shared):

- "Add Share" – opens the form for creating "Shared folder" entry in the SymSMB database with values preset by the context ([see "Shared folder"](#));
- "Remove Share" – cancels the shared location for the corresponding "Shared folder".

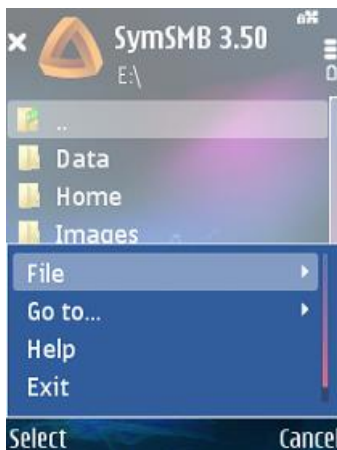
### 5.1.1.1 Volume properties



"Volume properties" form displays the properties of the current drive. It contains the following fields:

- "Name";
- "Size";
- "Free space";

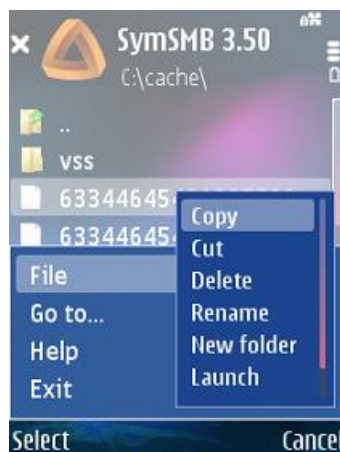
### 5.1.2 Drives



Inside the drives (local or mapped) available through the "My Phone", the following menu commands are available:

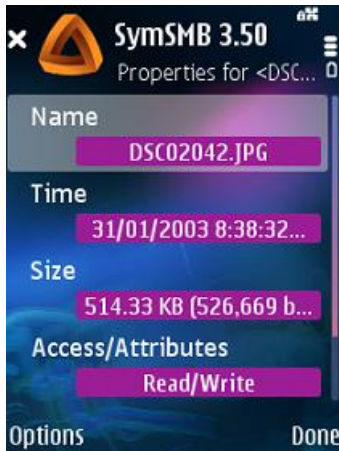
File(📄)/folder(📁) operations are grouped in the submenu "Files". The following operations are available:

- "Properties" – description of the file/folder attributes;
- "New folder" – creates a folder with the specified title;
- "Cut" – marks the item(s) in order to be later moved using "Files > Paste";
- "Copy" – marks the item(s) that can be inserted later using "Files > Paste";
- "Paste" – inserts previously marked item(s), into the current folder. This command is only available after "Cut" or "Copy";
- "Delete" – deletes the selected item(s) after a confirmation;
- "Rename" – renames the selected item;
- "Launch" – (AVAILABLE ONLY FOR LOCAL DRIVES!!!) executes the selected file. I.e. if this is a music file then it launches the music player; if this is a video file then the video player is launched. The same operation is performed using the rocker pressing.



If some files in the current folder are marked (by standard S60 means) then the file operation is applied to the group (if applicable).

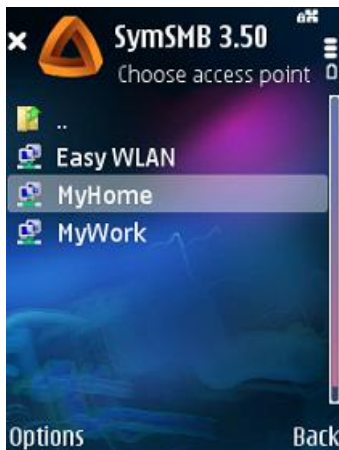
### 5.1.2.1 File/Folder properties



"File/Folder properties" form displays the properties of the current file or folder. It contains the standard fields:

- "Name";
- "Time" (modification);
- "Size";
- "Access/Attributes";
- "Type";

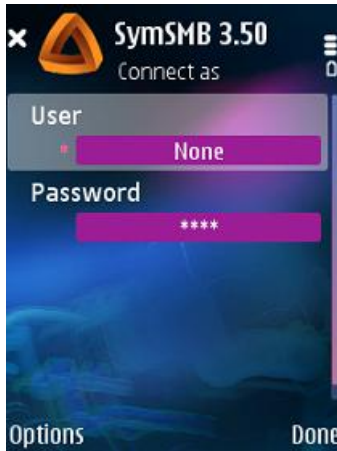
## 5.2 "NETWORK NEIGHBOURHOOD" SECTION



Entering the "Network Neighbourhood" section results in displaying the list of Symbian Access Points registered in the system. These can be used to browse the network's surroundings.

To begin browsing the network using the desired Access Point, navigate to it and use the "Open" menu option, press the rocker or use rocker's "Right" button.

### 5.2.1 Login procedure



Upon the first attempt, the system will request the name and password of the account you use to login into the selected network. If the login succeeds, the information entered for the login will be saved in the "Accounts" list automatically (see [section 5.3.5](#)). Subsequently, the system will use the saved accounts when logging into a network. The system will request the parameters for creating a new account only if none of the existing accounts match the current environment.

### 5.2.2 Network computers

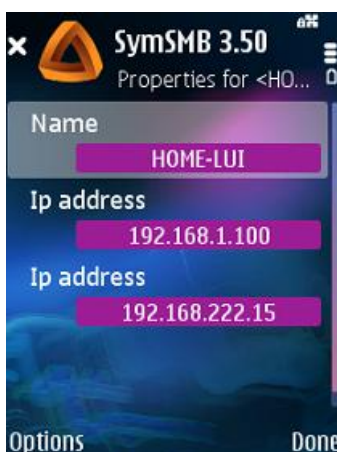
A successful result of entering an Access Point is (see [example](#)) a list that displays the computer's names which are available over the network using this AP (the Access Point is specified in the window's header).

To view the shared resources of this computer navigate to it and use the "Open" menu option, press the rocker or use rocker's "Right" button.

If you have sufficient permissions to access this computer, you will be permitted entry.

If you do not have sufficient permission you will see an "Access denied" message.

#### 5.2.2.1 "Properties" menu option



"Properties" menu option displays the properties of selected network computer. The form contains the following fields:


- "Name";
- "IP address";

If the computer has multiple IP addresses, all of them will be listed. But only first address will be used by SymSMB to access that computer.

### 5.2.3 Network shares



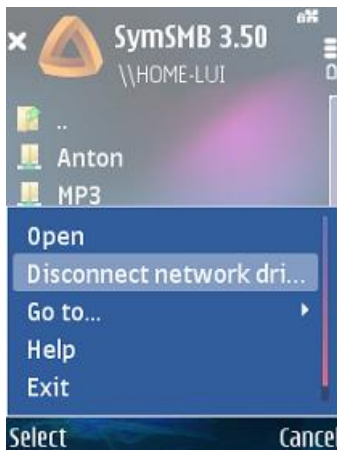
This list displays the Share names for the network computer specified in the header.

If this Share is already registered in **SymSMB 3.50** as a "Network Drive", this will be marked by a special icon (  ) located next to such shared location.

To enter the desired Share, navigate to it and use the "Open" menu option, press the rocker or use rocker's "Right" button.

If you have sufficient permissions to access this Share, you will be permitted entry. If you do not have sufficient permission you will see an "Access denied" message.

#### 5.2.3.1 Network Share's menu options



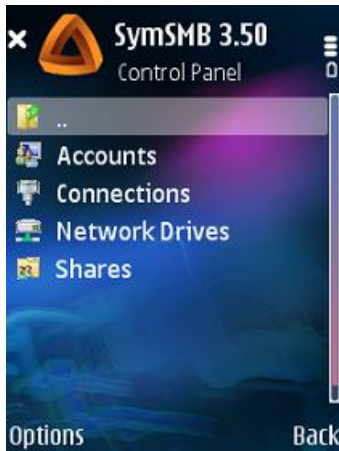
Depending on the state of the Share (not mapped/mapped) the following additional menu commands are available:

- "Map network drive" – opens the form for creating "Network Drive" entry in the SymSMB with values preset by the context (see [section 5.3.8.1](#));
- "Disconnect network drive" – opens the form for viewing the corresponding "Network Drive" in SymSMB DB for its deletion.

### 5.2.4 Network Share file operations

Inside the Share available through the "Network Neighbourhood" the menu commands are almost the same as for "My Phone" drives (see [section 5.1.2](#)) with one exception - "Launch" menu command is **UNAVAILABLE** in "Network Neighbourhood" work area!

### 5.3 "CONTROL PANEL" SECTION



In addition to configuring **SymSMB 3.50** while browsing local drives ("Add Share"/"Remove Share" (see [section 5.1.2](#))) and "Network Neighbourhood" ("Map network drive"/"Disconnect network drive" (see sections [4.4.1](#) and [5.2.3.1](#)); automatic user account creation (see section [5.2.1](#))), the application can be configured using the "Control Panel". It consists of four sections:

- 1) The "Accounts" section contains the user account information that is used to ensure secure access to shared local or network locations.
- 2) "Connections" section lists connection methods for shared phone's drives. They are called "Connection";
- 3) "Shared folders" section lists the phone's shared locations that can be accessed externally;
- 4) "Network drives" section lists external network locations which can be accessed from this phone.

The following can be set up:

- configuration for Local phone's folders or drives to be accessible from computer or other phone;
- configuration for External computer's (or other phone's) folders or drives to be accessible by the phone.

#### 5.3.1 Phone's folder sharing procedure

To share a phone's folders, the following 4 steps are required:

- 1) Create user account(s) that can access phone's Shares (using "Accounts" section); Account "Everyone" is predefined in the system and is used as a default account;
- 2) Describe access methods for the shares (using "Connection" section);
- 3) Specify the folders to be shared (using "Shared Folders" section);
- 4) Assign users and their permissions to the shared folders. Any new Shared folder is created with pre-defined full access permission for the "Everyone" account; permissions can be modified thereafter in any way.

#### 5.3.2 Network resource mapping procedure

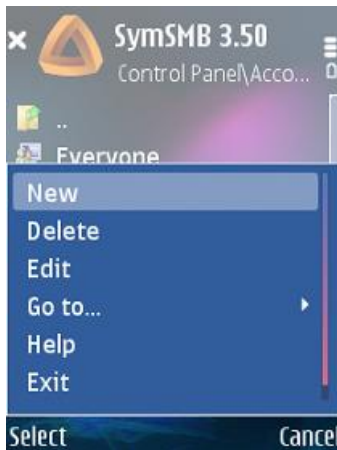
To describe shared resources of network computers that can be accessed using the phone, 2 steps are required:

- 1) Create user accounts that have permissions to access the computer (using "Accounts" section; same users can be used for sharing the local folders and accessing the network mapped drives);
- 2) Describe shared network computer resources (using "Network drives" section);

### 5.3.3 Navigation inside the "Control Panel"

Navigation between the Control Panel sections is done using "Up" and "Down" keys of the rocker. To enter the section press the rocker or use rocker's "Right" button. To leave the section use section's return link (🏠"..") or rocker's "Left" button.

### 5.3.4 General "Control Panel" menu options



The following operations are available for all setting sections inside the "Control Panel":

- "New";
- "Delete".
- "Edit";

Some sections have custom functions.

### 5.3.5 Accounts



The "Accounts" section contains the user account information that is used to ensure secure access to shared locations (local as well as network shares). In "Network-Phone" case, this menu lists the accounts for users that can access the phone's shares. In "Phone-Network" case, the information to be used to access network locations is listed. Standard network authentication methods are used to ensure secure access.

***The content of "Accounts" menu is your own secret information. Do not share it with others!***

The register includes a pre-defined account "Everyone" that is used by default.

### 5.3.5.1 Account properties



Accounts are described using the following 2 fields:

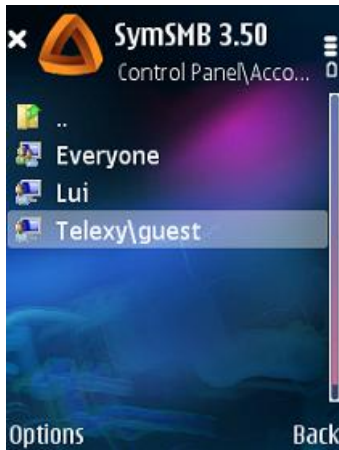
1) Username:

- a login name for the person that will access the phone's shares from the computer

OR

- a login name for the person that has permissions to access the network computer;

2) Password - corresponding password for the username field above;



**IMPORTANT:** In some cases it is required to include Domain name (for Domain Accounts) or Computer name (for Local Accounts) into Account Name.

In this case Username should be specified in format "Domain\Username" or "Computer\Username". In any case please use on the phone side whatever you use for login to your PC.

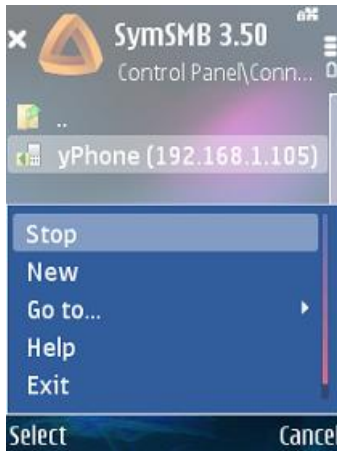
From SymSMB side we are looking for right Account matching "Domain(Computer)\Username" first. If such Account does not exist – we are looking for just Username.

If Username does not exists too – special account "Everyone" will be used.

### 5.3.6 Connections

"Connections" section lists the connection methods for shared phone's drives. They are called "Connection".

### 5.3.6.1 "Connections" menu options

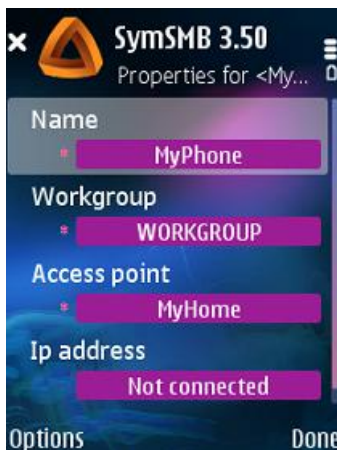


The menu in the "Connections" section has the following additional operations:

- "Start" – connects to the network using the selected connection;
- "Stop" – disconnects the selected connection from the network.

**IMPORTANT:** 1) Before accessing the phone's shared folders from a network computer the corresponding connection should be started!  
 2) You can keep a connection up even if exiting SymSMB. Your phone will be still accessible from the network. Do not forget to stop the connection when you are finished.

### 5.3.6.2 Connection properties



A connection is described using the following 3 fields:

- "Name" – this is the name under which the phone will be seen on the network when the connection is active;
- "Workgroup" – a workgroup or a domain name of the computer, which you plan to use to access the phone. Your phone will become a part of this domain under the title "Name" while browsing from your computer. When creating a new connection this field has a value "Workgroup" by default.
- "Access point" – describes the connection method. Any access point can be used (Wi-Fi, GPRS, 3G, Bluetooth, etc). Typically the access point represents a Wi-Fi router for one's home or an office network.

Additional property

- "IP Address" – make sense only if the connection is started successfully. Displays an IP address assigned to the phone.

### 5.3.7 Shared Folders

The Shared folders section lists the phone's shared locations that can be accessed externally.

#### 5.3.7.1 "Shared Folder" properties

To describe a share, the following 2 fields are used:

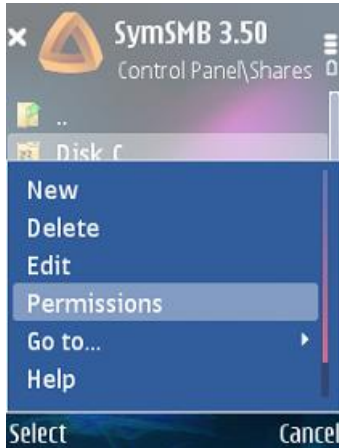
- "Folder" – full path to the shared location. It is entered using the wizard which works like the "My Phone" browser;

- "Name" – name of shared folder on the phone. When creating a new "Shared folder", by default this field gets a value of last catalogue in the full path to the shared location.

When creating a new shared location, full permissions will be given to Everyone. You can easily change the permissions according to [section 5.3.7.2.2](#).

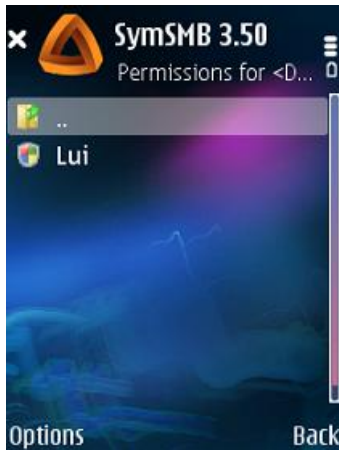
Adding permissions to the share is needed to specify access type of the accounts to the share.

### 5.3.7.2 "Shared folders" menu options



Additional menu item "Permission" opens register of user's accounts that have any rights for a current folder.

#### 5.3.7.2.1 "Permissions" list



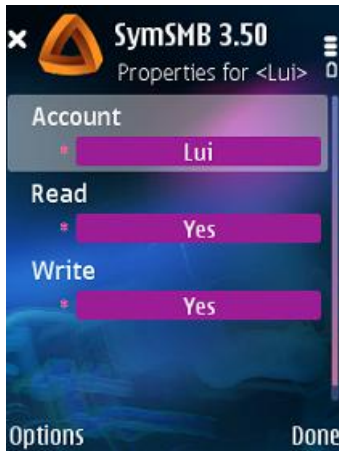
This list contains users that are allowed to access this shared folder together with the permissions for each one. The permissions can be:

- To Read - permission allows reading directories and files.
- To Write - permission allows creating, modifying, deleting, renaming and writing to the files and directories.

If the user has both permissions, then the one has "full access" to this shared folder.

You can add or remove users from this list or modify their rights.

### 5.3.7.2.2 Permission properties



To describe user permissions, the following 3 fields are required (see picture in ):

- "Account" – link to a user from the "Account" table. This user receives access rights to this "Shared Folder". Account "Everyone" is used by default. The rights are specified below:
- "Read" – if "Yes", user can browse and read from the "Shared Folder";
- "Write" – if "Yes", user can create or modify information on the "Shared Folder";

## 5.3.8 Mapped Network Drives

Network drives section lists external network locations which can be accessed from this phone.

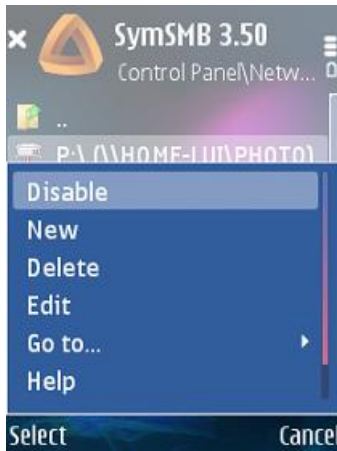
After the new network drive is specified it appears in the "My Phone" section and is ready to use. See [example in 4.4.1](#).




### 5.3.8.1 Network drive properties

Each network location (see [example in 4.4.1](#)) is described using:

- "Name" – short name the user gives to the network location;
- "Drive" – letter for the drive to be used to access;
- "Access point" – access point used to access the network location;
- "Account" – link to the "Accounts" table entry which will be used to access the network location;
- "Host" – URL or IP address of the network computer which hosts the location;
- "Share" – network shared folder name.

### 5.3.8.2 "Network Drives" Menu options



You can disable the Network Drive using the "Disable" command if for some reason it should not be displayed on "My Phone" screen. You can later revert this action, using the "Enable" command. The state of enabled (  or  )/disabled (  ) displays different icons.

## 6 ACCESS FROM NETWORK TO PHONE

To start using remote network drives it is enough to enter their descriptors in "Network Drives" section. To browse "Network Neighbourhood" you need only know what access point should be used in your current place and your login on the computer you'd like to connect to.

Below we will describe how to access phones shared folders from a network computer.

When a minimal configuration considered in the previous section is done, the main function of the system can be used.

In order to initiate the "Network-Phone" service offered by **SymSMB 3.50** you have to fulfil two easy steps:

- start a connection;
- go to your computer and get an access to the phone's shared folders;

### 6.1 CONNECTION START

See sections [4.4.2](#) and [5.3.6.1](#) for connection Start/Stop operations. Keep in mind that a connection can be kept started even if you are exiting SymSMB (see [5.3.6.1](#))

### 6.2 ACCESS TO PHONE'S SHARED FOLDERS FROM YOUR COMPUTER

#### 6.2.1 Windows

This section is valid for following Windows platforms:



- Windows 2000;
- Windows Server 2003;
- Windows XP;
- Windows Vista.

An access to your Phone from your computer can be fulfilled or prearranged in several ways:

- through the "Network", "My Network Places", "Network Neighbourhood" or whatever your operating system has for network browsing;
- as a mapped drive;
- via full network share name path;
- actually, any way to access an Internet resource would be accepted.

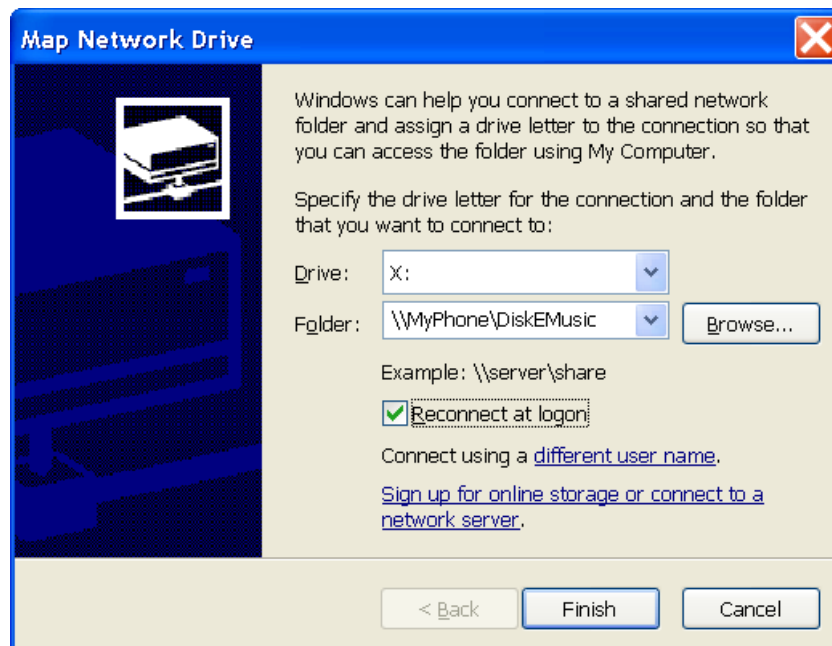
### 6.2.1.1 Network browsing

When phone connection is started, go to the Network browsing section on your computer and refresh it. During the refresh (this may take a few seconds) a new network computer with the connection name will appear (See figures 1-2 in section 4.4.2).

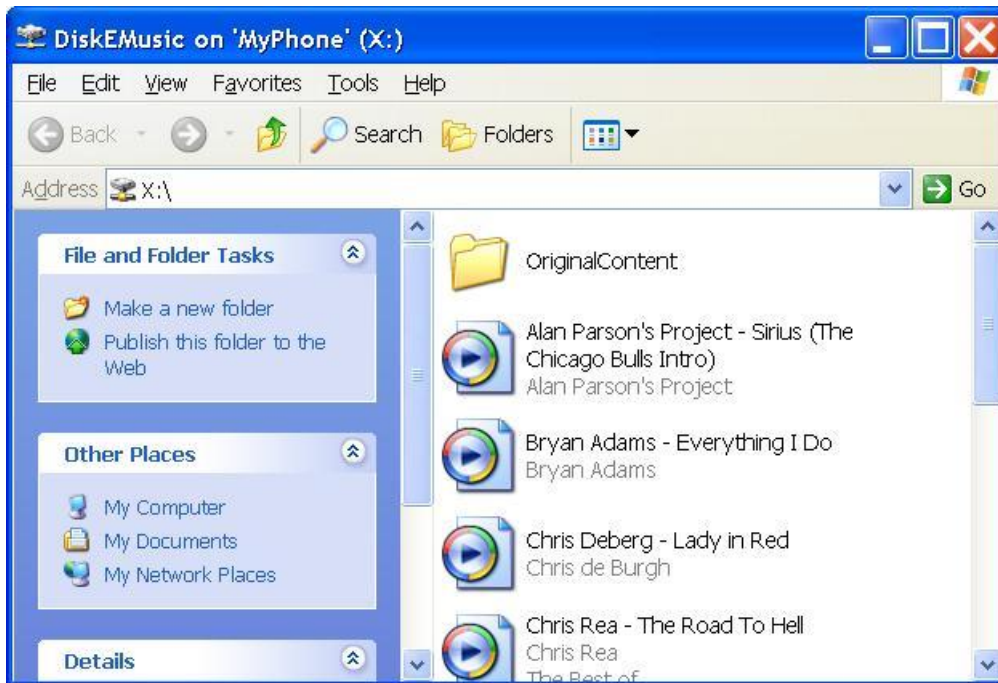
This is it – this is your new network resource. You may use it just as you would any other computer: browse its shared location, open the files from it, perform any file operations (copying, deleting, creating, etc.), map its shared locations, etc.

### 6.2.1.2 Drive mapping

Use regular "Map Network Drive" process. Please, remember, that the folder you are mapping is \\<connection name>\<share name>.



If you have created a user account according to the existing account on your PC (see [5.3.5.1](#)), you will be automatically mapped to your phone's folder:

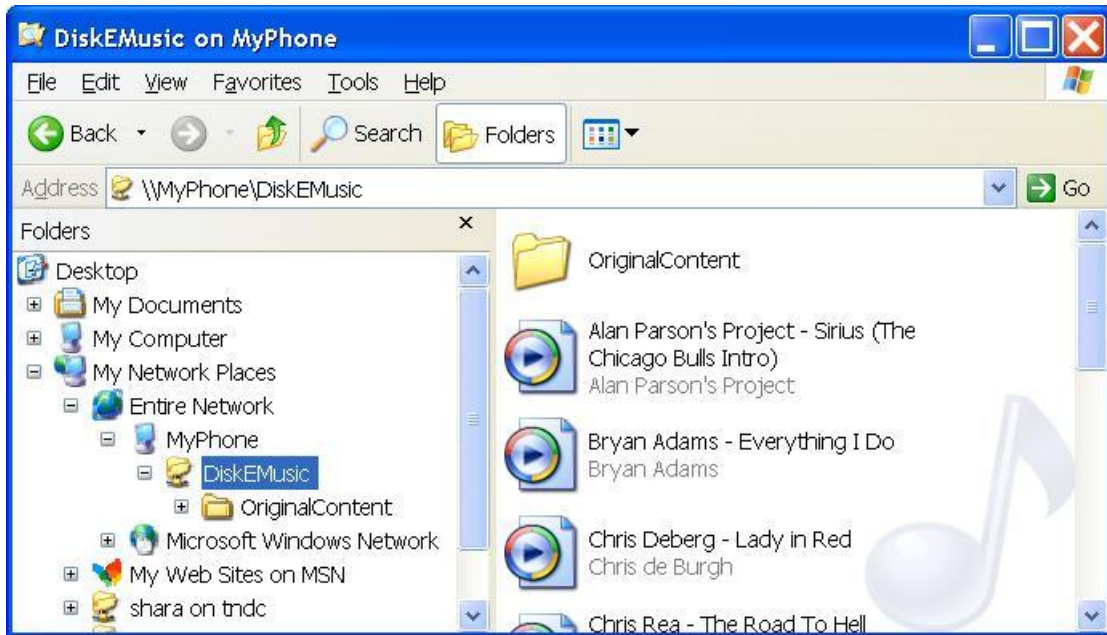


Otherwise you will be asked for the user name and password:



### 6.2.1.3 Full network share name path access methods

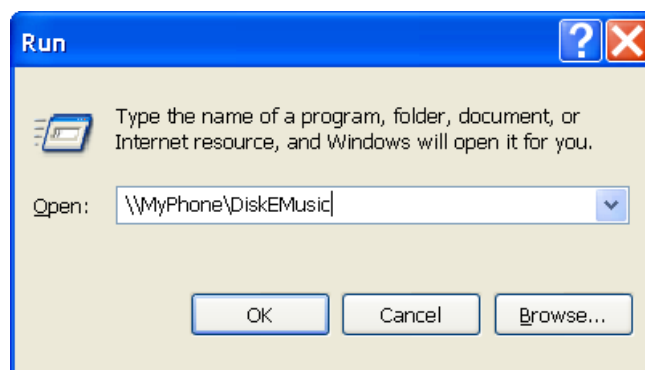
You can enter the phone's resource name directly in "Address" field of Explorer:



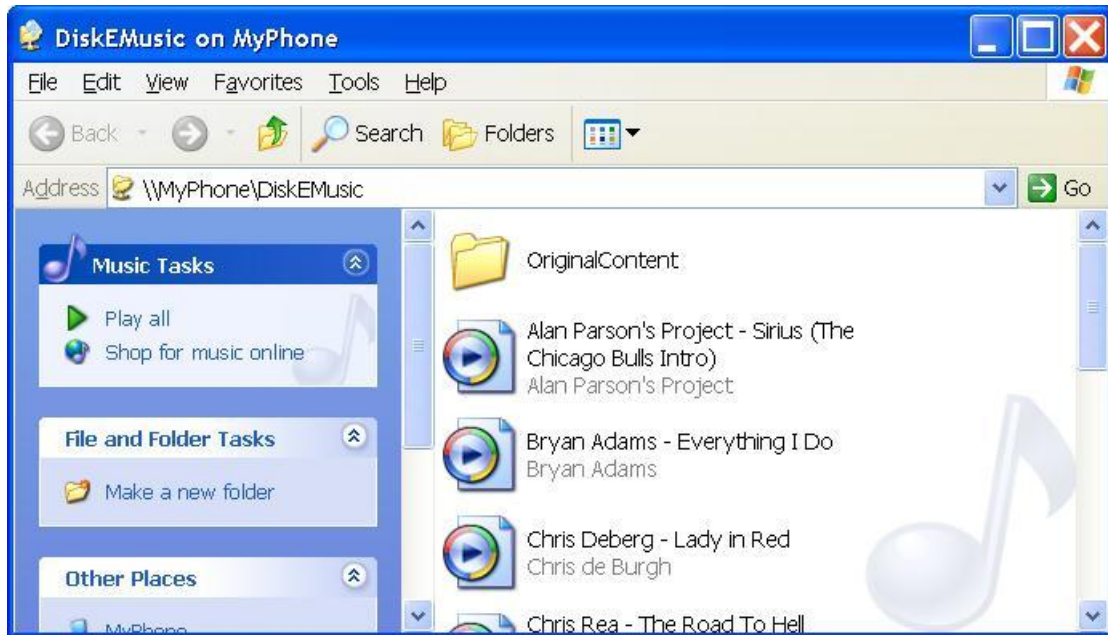
As a result the phone's shared folder would be accessible via Explorer's "...My Network Places\Entire Network\..." (according to the picture above) during the current Explorer session.

Another method to access the phone's shared folder is "Start\Run".

Initiate Start\Run and open the desired folder as a regular Internet resource.



After that you can access your phone storage ordinarily via Explorer:



### 6.2.1.4 A shortcut usage

One can decide that rather than mapping a shared drive, it's faster to create a shortcut to the network location and use it if necessary. This generally does not slow down using My Computer/Explorer which constantly attempts to check if the network drive is already on.

## 6.2.2 Linux



This section includes examples of accessing smartphone's shared folders (shared by **SymSMB 3.50**) from Linux Ubuntu, version 6.10 ([www.ubuntu.com](http://www.ubuntu.com)). Procedures on other Linux systems should be similar but may differ in details one from another. Differences can be in the mount command syntax as well as in the UI part. Please refer to your Linux documentation regarding such details.

There are at least 2 ways to connect a shared folder from Linux.

### 6.2.2.1 Low level or mount

Please refer to Linux documentation for the full list of mount command parameters on your system. For Ubuntu you can use this:

```
sudo mount -t cifs //192.168.1.101/share_name /home_folder -o
username=<>,password=<>,domain=<>
```

where:

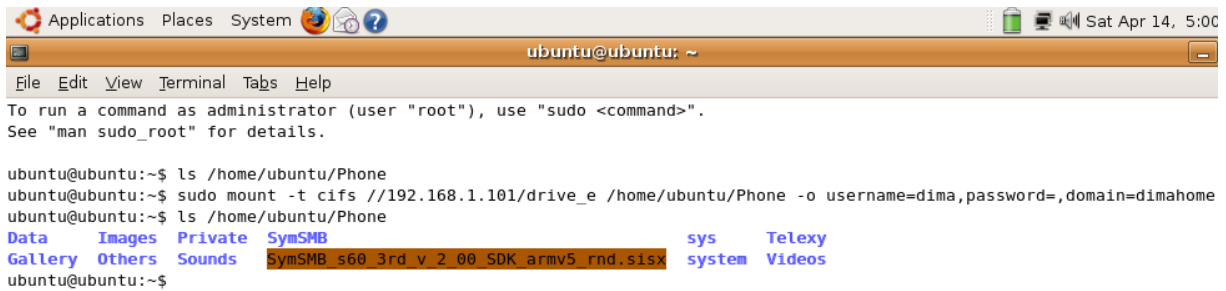
- 192.168.1.101 is IP Address of your Phone;
- share\_name is a name of your shared folder on the Phone;
- /home - Linux folder (existing) that the share will be mapped to;

- username, password and domain – you Phone Account specification.

So you need to start from creating an empty folder in Linux native file system to be the home for your share:



Then you need to open a Terminal window and run a mount command:

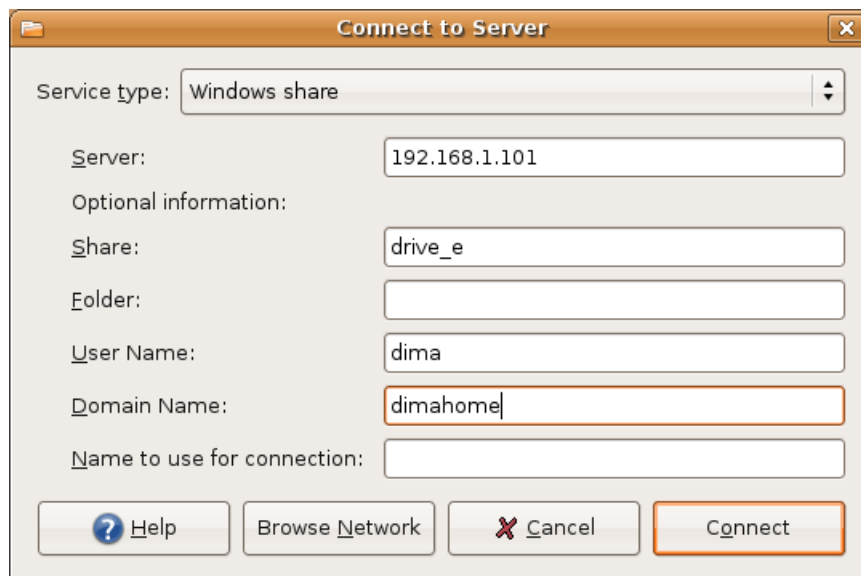


Finally you can access your shared Phone folder by accessing the "home" Linux folder:

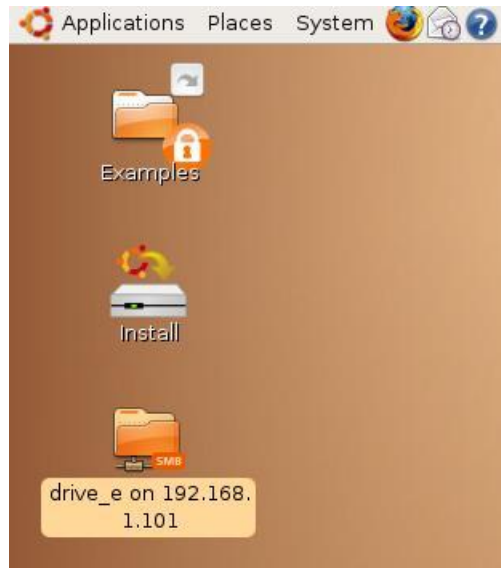


### 6.2.2.2 High level or VFS (Virtual File System)

Another way to map your Phone shared folder is using Ubuntu high level user interface. Start from menu "Places\Connect to Server..." and choose Service type "Windows share" in opened dialog:



Specify required information (except password) and press "Connect". You will get a new Icon on your desktop with small red sign "**SMB**":



Double-click it and enter the password in dialog that appears:



And here we are, our shared folder is available from the File Browser:



### 6.2.2.3 Few final words about the methods difference

When you use mount, your shared folder is available as if it is a native Linux file system folder; there is no difference. All applications can use it natively; you can even share it again as a Linux share, using SAMBA for example. And after that do something silly like access it from your Phone using **SymSMB 3.50** client...

When you use a "high level", your share is not inside the File System, but "near" it (see left pane of the last picture). It is available through the so called VFS (Virtual File System). So it will be available only for those applications that "understand" VFS (fortunately most, if not all, of high level applications like File Browser or OpenOffice.org do).

### 6.2.3 Mac



This section includes examples of accessing smartphone's shared folders (shared by **SymSMB**) from Mac's OS/X 10.5 (Leopard). Examples for previous Mac OS (10.4) can be found elsewhere:

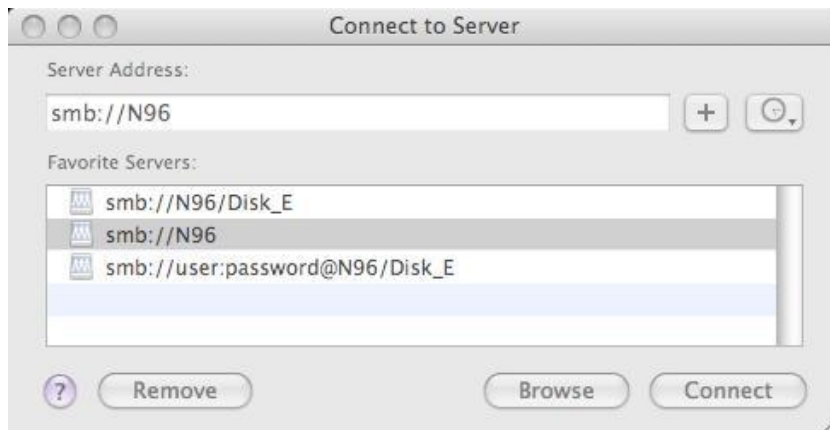
<http://lifelhacker.com/software/mac-os-x/how-to-mount-a-windows-shared-folder-on-your-mac-247148.php> or <http://forum.telexy.com/ShowPost.aspx?PostID=224>

#### 6.2.3.1 Phone shared folders mounting

Start from "Go\Connect to Server..." menu:



Type full or partial share address in "Server Address" field:



The full format is: **smb://<user\_credentials>@<host>/<share>**, where

**<user\_credentials>** - user name and password to access the Share in format **<name>:<password>**. For example: "user:secret" or "MyDomain\user:secret" (for authenticating by Domain Account). This part can be omitted to connect with current user.

**<host>** - Name or IP address of the Server. In our case name means SymSMB Connection name.

**<share>** - share name (can be omitted).

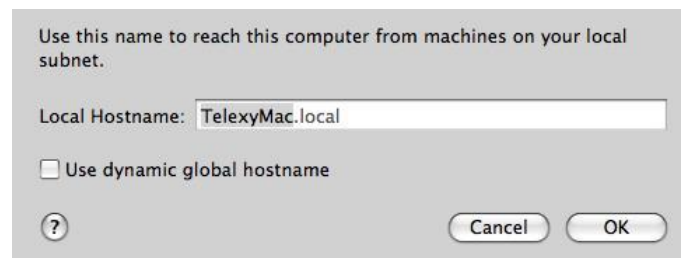
Please refer to the above picture for an example.

### 6.2.3.2 Mac folders sharing

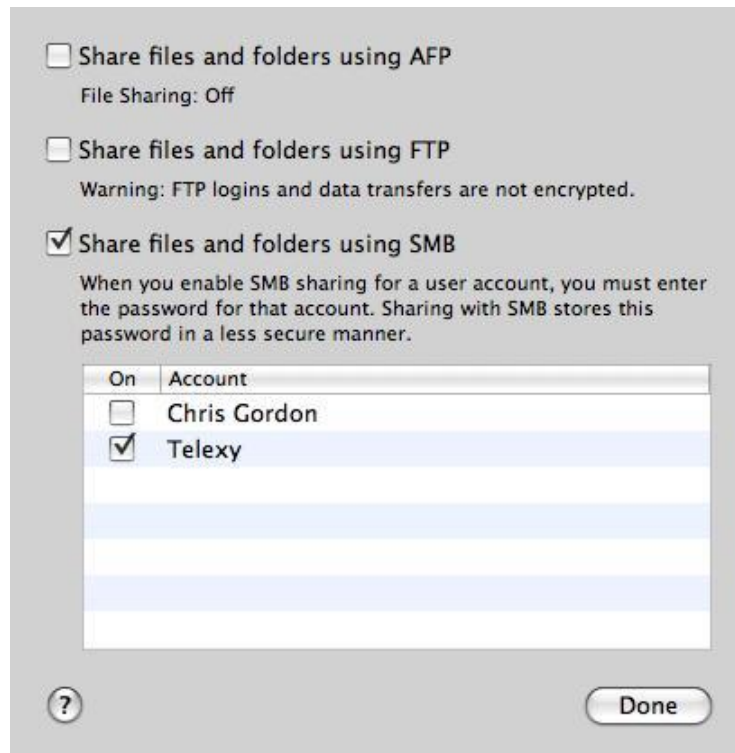
Open Sharing dialog in Preferences:



Here you can enable File Sharing, specify shared folders and set access rights for them. Also you can specify Computer Name for your Mac in Windows Network:



Please make sure you have Windows Sharing On ("Options..." button):



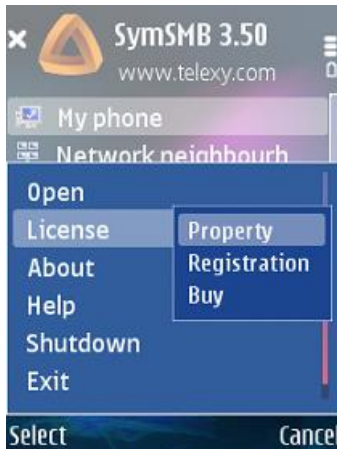
## 6.3 EVERYDAY WORK SCENARIO

When all configurations within the system are done and your computer has the mapping information, you can activate the system to access phone's shared folders only by starting the desired connection (see [4.4.2](#)). Do not forget to stop it when you finished.

## 7 LICENSING AND REGISTRATION

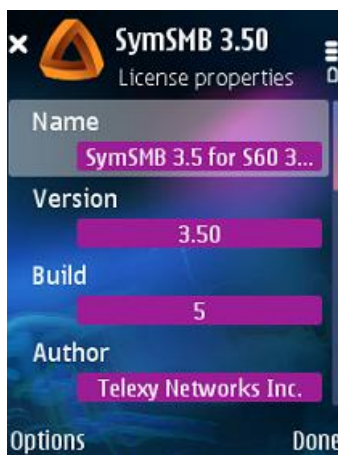
As you might remember from the [section 3.2](#) **SymSMB 3.50** can be either in "TRIAL" or in "Registered" state.

## 7.1 TRIAL LICENSE



While the application is in "Trial" state, every launch would cause "TRIAL" warning (see [section 4.1.2](#)).

At any moment you can check the application license from the root application page via "Menu\Licence\Property". You can find that the type of the licence is "Trial", it is issued to your phone (check the SN), what are the activation and expiration dates. At any moment you can check the EULA.



## 7.2 HOW TO REGISTER



Sooner or later you will face a point when you have to decide whether this application is worth buying. If it is, you have to legalize it on your phone. Of course, you can wait to the uttermost – trial licence expiration but in this situation the only option that remains will be "Register".

Thus, how to register our product? Select "Register" option and then choose "Download prepaid license" command. You will be asked about a licence acquisition first. If you haven't bought a licence yet ("No"), the application instructs you what to do in order to register.



So, you have to go to our web-site [www.telexy.com](http://www.telexy.com) and [buy a full licence](#).

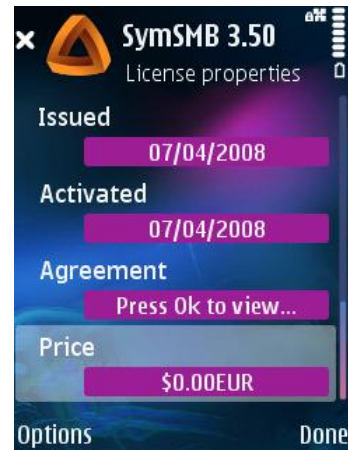
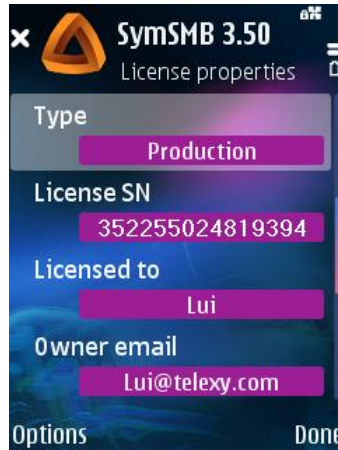
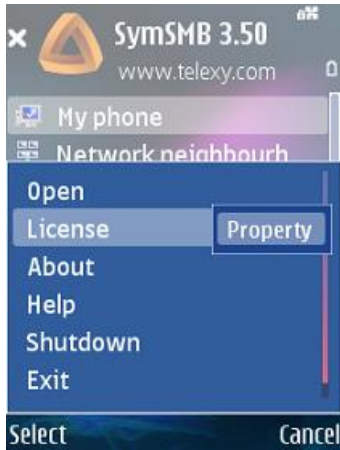
When a licence has been bought, you can finalize the registration process on your phone. Select "Register" and "Download prepaid license" options again and agree to "download" and "register" the license in the following two dialogs.



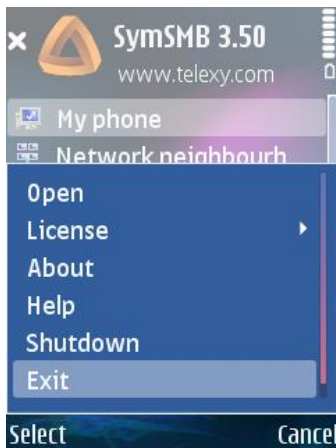
Successful registration will be indicated. Press "OK" to finish.

### 7.3 LEGAL LICENSE

You can view the downloaded licence, selecting the "Menu\Licence\Property". New licence is personalized. It also has "Production" type, a proper Serial number and appropriate dates and price fields.



## 8 EXIT AND SHUTDOWN



The application can be left using the “Exit” option. You can exit the application while the connection is up – connectivity is still active and you can access your phone from your PC (see [5.3.6.1](#)).

If for some reason you have to be sure that there is no any SymSMB activity on your phone – quit the application using “Shutdown” option.

## 9 CONCLUSION

We are continually trying to improve SymSMB. If you have any suggestions which could make the product better in any way, please address them to our [business department](#) and we will add your comments to our To Do list.

Please share with us your opinion, remarks, compatibility issues, possible problems, etc. on our forum: <http://forum.telexy.com/>. Should you have any problem, please feel free to contact our 24/7/365 [Customer Support Team](#).

We hope that this software is of value to you and that it makes your networking requirements simpler and easier to use.